



Maskwa Connect

Consultation and Project Management Software

What is Maskwa?



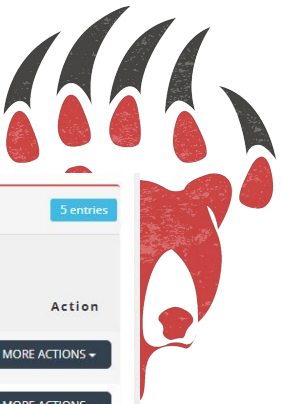
- Cloud-based consultation and project management software.
 - Enables efficient and streamlined project management and consultation processes.
- Specially designed by and for First Nations.
 - Tailored to meet the unique needs and priorities of First Nations communities.
- Developed with leading industry and government partners.
 - Collaboration ensures a robust, reliable, and relevant tool.

Accessibility and Compatibility

Access Anywhere, Anytime

- Fully compatible with PC, laptop, and mobile devices.
 - Flexibility to management projects from various devices, enhancing accessibility.
- Manage projects and consultations on-the-go
 - Ideal for users who require mobility and remote access.





Industry Demo Referrals 5 entries

Date		Industry Info		Project			Action	
Entered	Due	Contact	ACU No.	Number	Name	Location	Status	
30-Apr-23	22-May-23	Lee Smith 780.888.8888	FNC1234567890	P00000058	Conoco	Calgary	Review Required assessment	VIEW REVIEW MORE ACTIONS
26-Feb-24	18-Mar-24	Lee Smith 780.888.8888	FNC1234567890	P00000100	KEHEWIN CREE NATION Road Access	KEHEWIN CREE NATION	Review Required map assessment	VIEW REVIEW MORE ACTIONS
27-Feb-24	19-Mar-24	Lee Smith 780.888.8888	FNC1234567890	P00000101	Frog Lake	Frog Lake Road	Review Required	VIEW REVIEW MORE ACTIONS
28-Feb-24	20-Mar-24	Lee Smith 780.888.8888	FNC1234567890	P00000111	Stoney FN	Nakisha	Review Required	VIEW REVIEW MORE ACTIONS
28-Feb-24	20-Mar-24	Lee Smith 780.888.8888	FNC1234567890	P00000112	edmonton	Enoch	Review Required	VIEW REVIEW MORE ACTIONS

Project Submission & Review

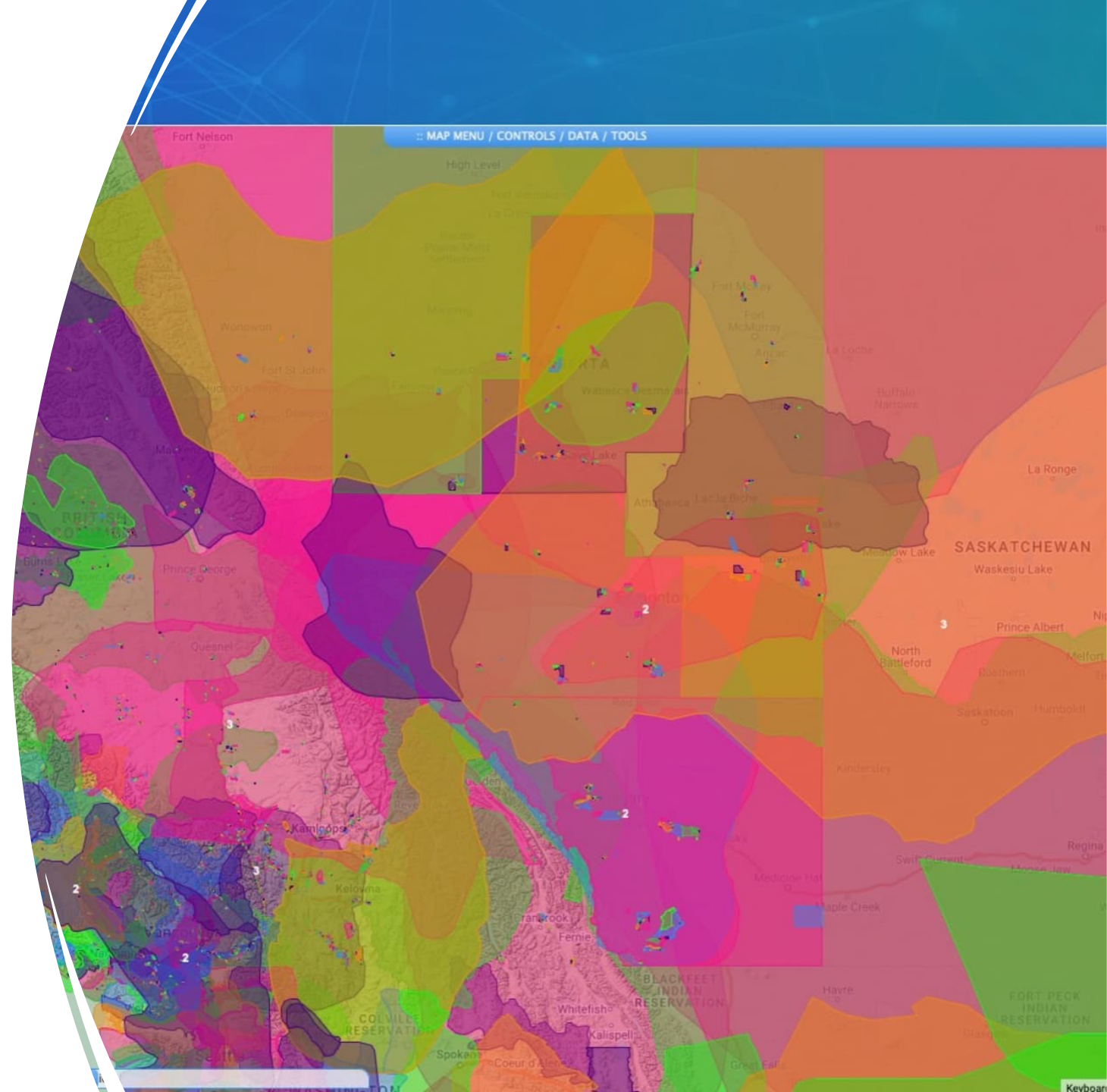
Effortless Project Submission & Review

- Submit and review projects with ease.
 - Streamlined submission process, making it user-friendly and efficient.
- User-friendly interface for streamlined processing.
 - Intuitive design ensures ease of use for all users.
- Application Mapping Software available for data point collection.
 - Create user accounts for membership to take part in building the nation's TLU data points.

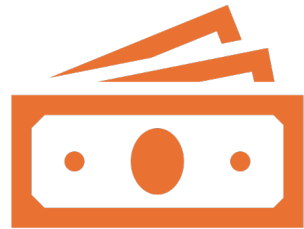
Advanced Mapping Capabilities

Advanced Mapping with Instant TLUs Overlays

- Visualize projects with instant map overlays.
 - Offers a visual and interactive way to plan and review projects.
 - Includes proximity of TLU points to the proposed project.
- Integrate Traditional Land Use (TLU) data seamlessly.
 - Enhances understanding and respect for traditional lands.
 - Provides education to youth and retains traditional knowledge that can be lost after each generation.
 - Effortlessly upload current TLUs or collect new ones.

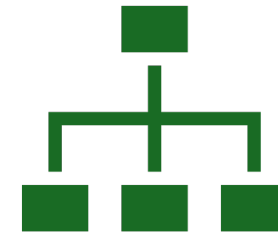


Financial Management Tools Integrated Accounting Features



Track project finances accurately.

Comprehensive tools for budget tracking and financial oversight.



Easy monitoring of budgets and expenditures.

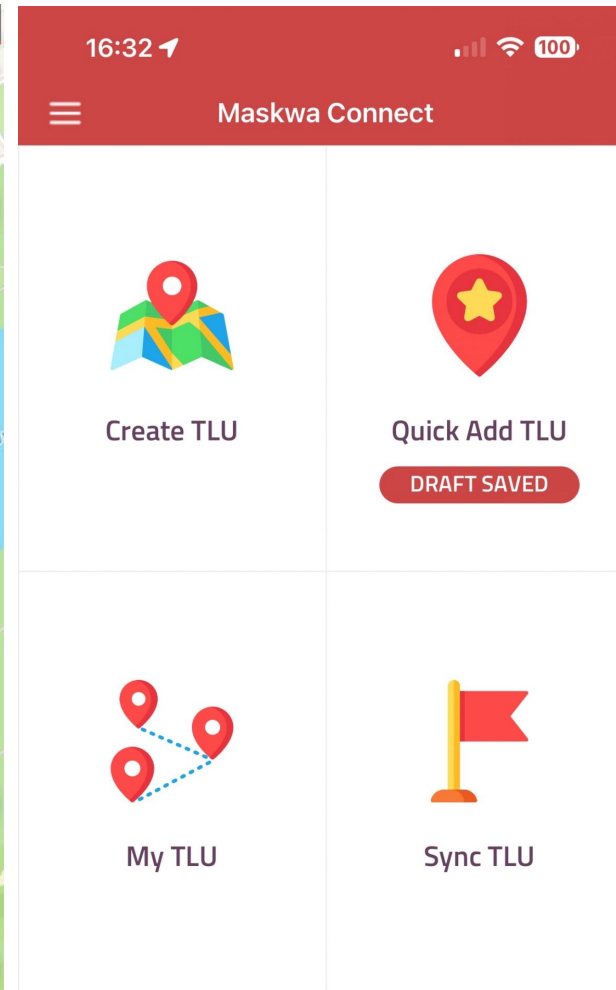
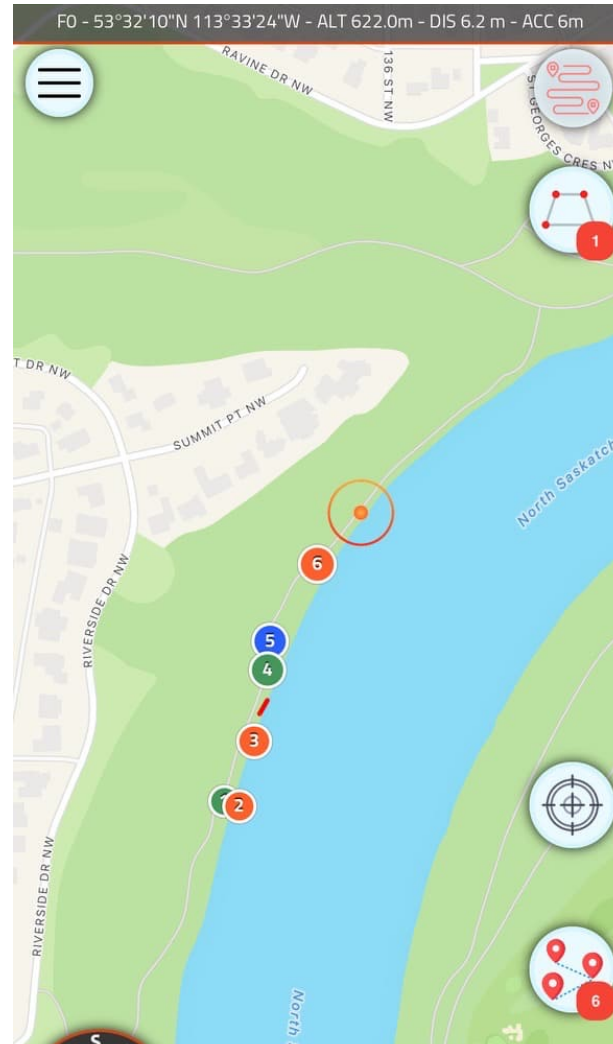
Simplifies financial management ensuring transparency and accountability.

E-Transfer System in place as part of the setup.

Deadline and Request Tracking

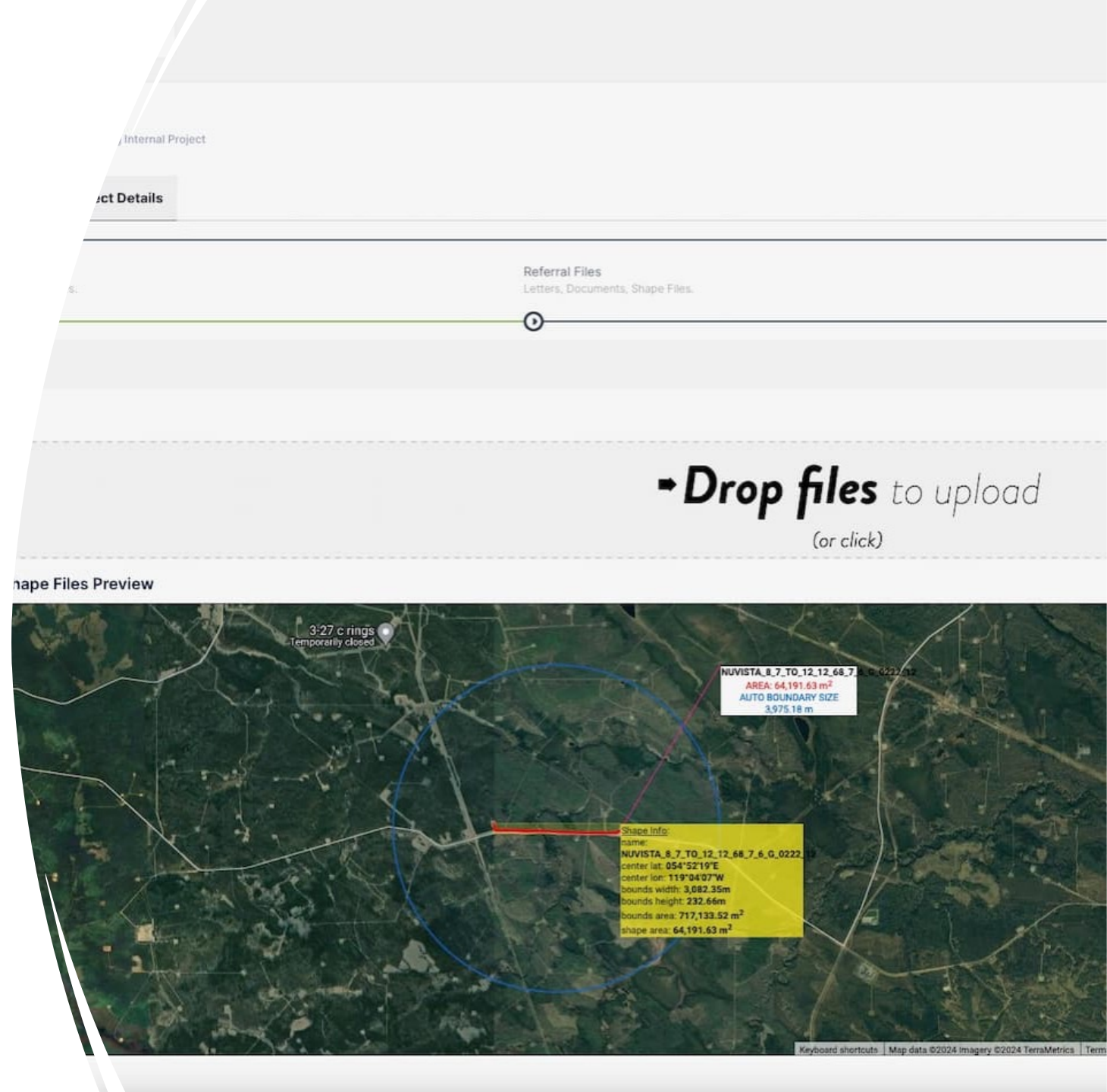
Stay on Track with Deadline & Request Management

- Keep track of all project deadlines and requests.
 - Helps in maintaining schedules and meeting project milestones.
- Automated reminders and alerts.
 - Ensure critical deadlines are met, improving project efficiency.
- Transparency on all levels.
 - Alert emails to be sent to Chief & Council regarding unattended projects and upcoming deadlines.



The Power of Instant Control and Capacity Transform Efficiency and Control

- Replace weeks of work with minutes of management.
 - Dramatically reduces time and effort required for project management.
- Secure, paperless, and efficient project handling.
 - Environmentally friendly approach that enhances data security.
- Stay connected and in control anywhere with internet access.
 - Offers unparalleled flexibility and control over project management.



Next Steps: What is required from the Nation?



- Signing an Agreement with Maskwa Connect.
 - Formalize the partnership through an agreement, establishing the terms of use and collaboration.
- Preparing a Notification Letter for Industry Partners.
 - Draft a letter (or use our provided template) to inform industry partners about the transition from physical to digital platforms for consultation and project management.
- Listing Current Industry Agreements.
 - Compile a comprehensive list of all existing agreements with various companies to integrate them into the Maskwa Connect system.
- Assembling a Team for Data Collection.
 - Identify and enlist members from the nation interested in working with the Maskwa Application for data point gathering.
 - This team will play a crucial role in ensuring the accurate and comprehensive input of data into the system.